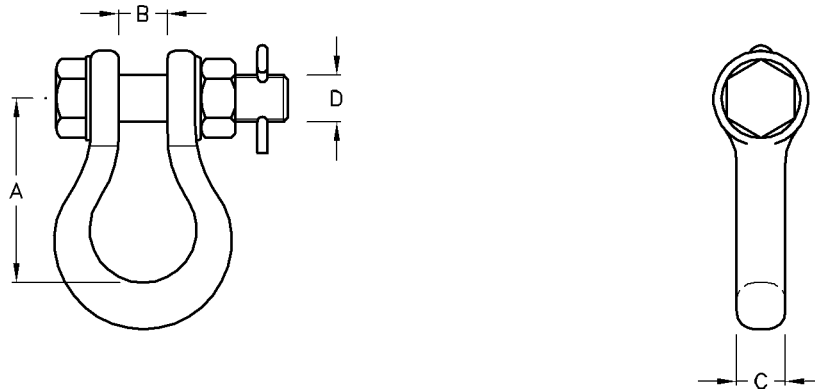


### Straight Shackle Pin Type

Type No.	Catalogue No.	A	B	C	U.T.S (kN)	Unit Weight
SH-70	B30253	70	19	16	70	0.50kg

- Note:** 1) Material: D.F.Steel H.D.G.  
 2) Can be supplied either with split cotter pin or hump back split pin.  
 To be specified.



### Straight Shackle Bolt Type

Type No.	Catalogue No.	A	B	C	D	U.T.S (kN)	Unit Weight
SHB-120	B30263	70	19	16	M16	120	0.55kg
SHB-210	B30273	80	21.0	16	M20	210	0.80kg

- Note:** 1) Material: D.F.Steel H.D.G.  
 : Bolt H.T.Steel 8.8 H.D.G.  
 2) Can be supplied either with split cotter pin or hump back split pin.  
 To be specified.