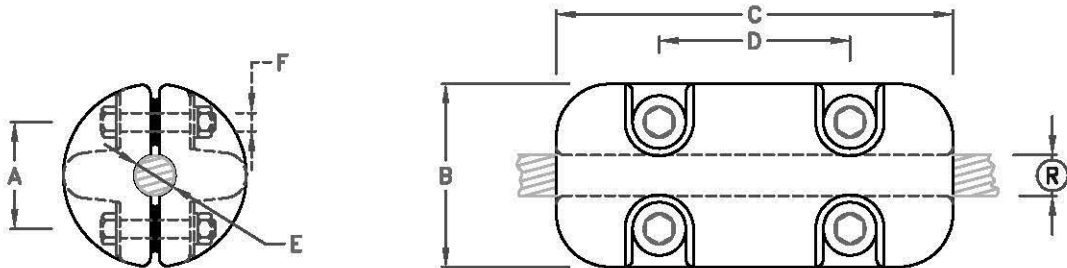


Rigid Spacer Weight

Type No.	Catalogue No.	Conductor $\text{\textcircled{R}}$	A	B	C	Unit Weight
RS-1/LC	H32812	12-20	450	100	53	40.41kg

Note: 1) Material: Cast Iron H.D.G.



Jumper Weight

Type No.	Catalogue No.	A	B	C	D	E	F	$\text{\textcircled{R}}$	Unit Weight
W-1	H32913	70	120	260	125	$\text{\textcircled{R}}40$	4xM12	38	25.0kg
W-2	H32923	70	120	260	125	$\text{\textcircled{R}}26$	4xM12	26	25.0kg
W-3	H933543	70	124	120	0	$\text{\textcircled{R}}20$	2xM12	20	12.5kg

Note: 1) Material: Lead Antimony