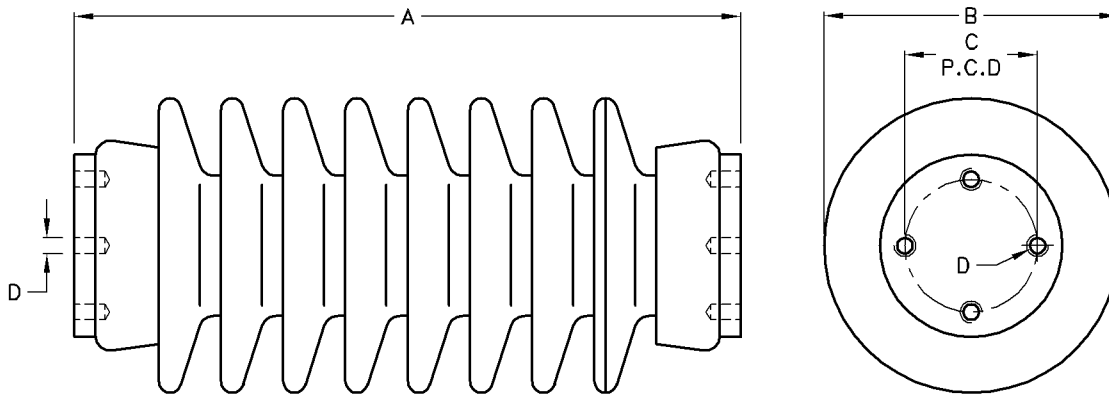


Line Post Porcelain Insulator

Type No	Catalogue Number	A	B	C	D	E	R	Creepage Distance (mm)	Power Frequency Flashover Voltage		Critical Impulse Flashover Voltage		B.I.L.	Unit Weight
									Dry (kV)	Wet (kV)	Pos (kV)	Neg (kV)		
BME472-3/22kV	B90161	315	155	73	18	M20	18	630	124	84	187	362	183	8.65kg
BME967-00/22kV	B90171	343	150	73	20	M20	18	750	109	86	191	342	170	9.30kg

57-3S/33kV-50	B90031	430	180	73	25	M20	25	900	150	125	255	340	183	16.0kg
57-3S/33kV-230	B90111	430	189	73	25	M20	25	900	150	125	255	340	170	16.0kg
57-4/33kV-230	B90151	430	189	73	25	M20	25	1100	150	125	255	340	170	16.0kg

- Note:** 1) 33kV Insulators are supplied with spindles complete with nut, flat and spring washer.
 2) Spindles length to be specified on order.



Station Post Porcelain Insulator 11kV To 132kV-4kN

Type No	Catalogue Number	A	B	C	D	Creepage Distance (mm)	Power Frequency Flashover Voltage		Critical Impulse Flashover Voltage		B.I.L.	Unit Weight
							Dry (kV)	Wet (kV)	Pos (kV)	Neg (kV)		
C4-95/BME322-03/11kV	B932693	255	170	76	M12	380	86	60	151	215	146	6.60kg
C4-150/BME568-01/22kV	B932703	355	184	76	M12	680	98	81	190	304	181	11.5kg
C4-200/BME814/33kV	B932713	475	194	76	M12	1100	170	129	254	375	239	15.5kg
C4-250/BME314-05/44kV	B932723	560	194	76	M12	1300	150	105	275	350	250	22.0kg
C4-325/BME315-00/66kV	B932733	770	200	127	M16	2561	200	170	350	500	325	31.9kg
C4-380/BME316-05/88kV	B932743	870	210	127	M16	2000	200	225	400	550	380	46.0kg
C4-550/BME318-10/132kV	B933183	1220	218	127	M16	3050	369	331	667	828	634	47.2kg
C4-650/BME310-00/132kV	B932773	1500	234	127	M16	3750	464	379	770	948	750	82.4kg