

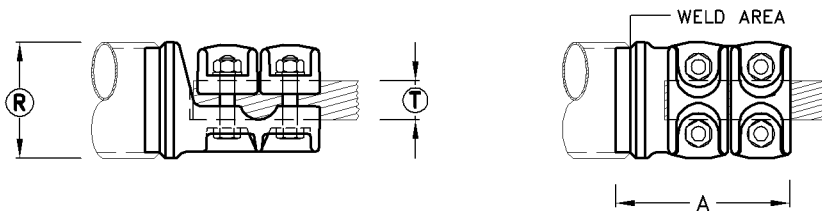
TBWP-80/75P TYPE

TBWPH-80/75P TYPE

TBWP-Type Welded Palm Clamp

Type No	Catalogue No	Tube Dia. Ⓡ	Palm Size		A	C	H	Max. Rating Amps.	Unit Weight
			X	Y					
TBWP-80/75P	C17022	80	75	95	145	95	60	2300	1.10kg
TBWPH-80/75P	C17032	80	75	95	145	160	120	2300	1.30kg

- Note:**
- 1) Palm contact surface areas are serrated.
 - 2) Palms are supplied undrilled or drilled to suit.
 - 3) Tube wall thickness is to be specified when ordering.
 - 4) Material : Cast Aluminium
 - 5) Voltage : 500kV Max.



TBWSIT-Type Welded Stud/Conductor Tap-off Clamp

Type No	Catalogue No.	Tube Dia. Ⓡ	Conductor Dia. Ⓢ	A	Max. Rating Amps.	Unit Weight
TBWSIT-80/26	C24673	80	26	120	900	1.60kg

- Note:**
- 1) Clamps are welded to end of bus tube.
 - 2) Stud contact surface areas are smooth bore.
 - 3) Conductor contact surface areas are serrated.
 - 4) Tube wall thickness to be specified when ordering.
 - 5) Material: Cast Aluminium
: Bolts & Nuts are Steel H.T.8.8. H.D.G. (Other materials and grades available on request)
 - 6) Voltage : 500kV Max.