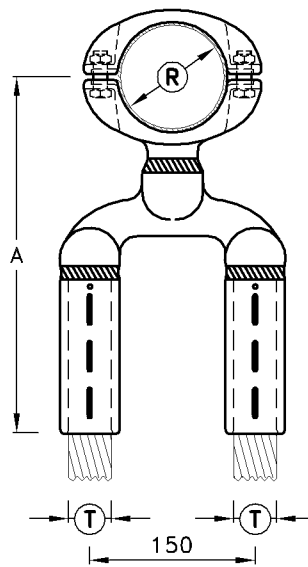
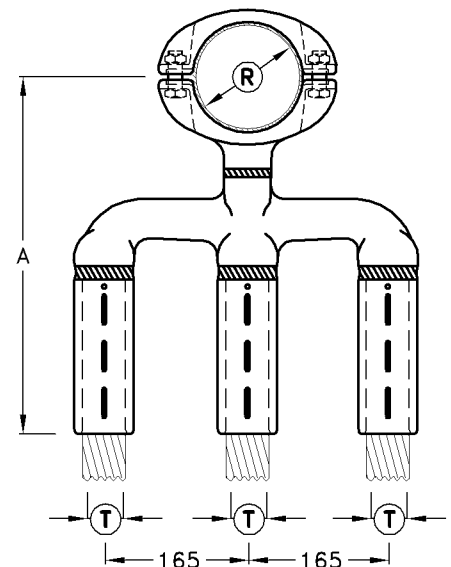


TBTC C1-38  
ONLY AVAILABLE  
AT 90°

Type C1



Type C2



Type C3

## TBTC-Type In Line Bus Conductor Tap-off Clamp

Type No	Catalogue No	Tube Dia. (R)	Cond. Dia. (T)	A/F After Compr.	A	Max. Rating Amps	Unit Weight
TBTC-80/C1-26	C24793	80	1x26	36	260	900	2.20kg
TBTC-80/C1-38	C24783	80	1x38	49	320	1350	3.30kg
TBTC-80/C2-26	C24743	80	2x26	36	325	1600	3.36kg
TBTC-80/C2-38	C24773	80	2x38	49	320	2300	3.76kg
TBTC-80/C3-26	C23783	80	3x26	36	325	2300	3.36kg
TBTC-80/C3-38	C23793	80	3x38	49	320	2300	3.76kg
TBTC-100/C1-26	C25703	100	1x26	36	216	900	3.00kg
TBTC-100/C1-38	C25693	100	1x38	49	216	1350	3.11kg
TBTC-100/C2-26	C23803	100	2x26	36	216	1600	3.00kg
TBTC-100/C2-38	C25673	100	2x38	49	320	2500	3.71kg
TBTC-100/C3-26	C23813	100	3x26	36	216	2300	3.00kg
TBTC-100/C3-38	C23823	100	3x38	49	320	3500	3.71kg
TBTC-120/C1-26	C26683	120	1x26	36	250	900	2.85kg
TBTC-120/C1-38	C26643	120	1x38	49	245	1350	2.65kg
TBTC-120/C2-26	C23833	120	2x26	36	250	1600	2.85kg
TBTC-120/C2-38	C26663	120	2x38	49	350	2500	4.20kg
TBTC-120/C3-26	C23843	120	3x26	36	250	2300	2.85kg
TBTC-120/C3-38	C23853	120	3x38	49	350	3500	4.20kg

- Note:**
- 1) The busbar contact surface areas are serrated.
  - 2) Clamps are supplied in 3 different angles 0°, 45°, 90° when ordering the angle required is to be specified.
  - 3) Compression tubes are marked showing crimp positions and die sizes.
  - 4) Other conductor sizes and centres are available on request.
  - 5) Material: Cast Aluminium  
: Bolts & Nuts are Steel HT.8.8. H.D.G. (Other materials and grades available on request)
  - 6) Voltage : 500kV Max.