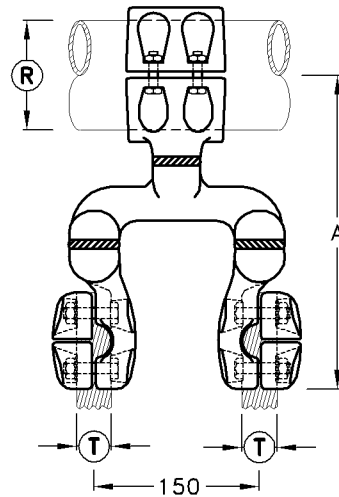
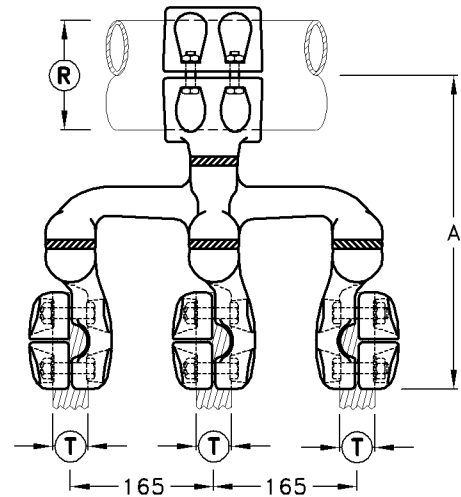


Type C1



Type C2



Type C3

TBBT-Type Twisted Bus Conductor Tap-off Clamp

Type No	Catalogue No	Tube Dia. $\text{\textcircled{R}}$	Cond. Dia. $\text{\textcircled{T}}$	A	Max. Rating Amps.	Unit Weight
TBBT-80/C1-26	C23603	80	1x26	220	900	3.46kg
TBBT-80/C1-38	C23613	80	1x38	240	1350	3.46kg
TBBT-80/C2-26	C23963	80	2x26	325	1600	3.56kg
TBBT-80/C2-38	C24823	80	2x38	345	2300	3.96kg
TBBT-80/C3-26	C23623	80	3x26	350	2300	3.66kg
TBBT-80/C3-38	C23633	80	3x38	355	3200	4.06kg
TBBT-100/C1-26	C23643	100	1x26	220	900	3.21kg
TBBT-100/C1-38	C23653	100	1x38	240	1350	3.21kg
TBBT-100/C2-26	C23663	100	2x26	230	1600	3.31kg
TBBT-100/C2-38	C25743	100	2x38	345	2500	3.91kg
TBBT-100/C3-26	C23673	100	3x26	245	2400	3.41kg
TBBT-100/C3-38	C23683	100	3x38	355	3500	4.01kg
TBBT-120/C1-26	C23693	120	1x26	250	900	2.95kg
TBBT-120/C1-38	C23703	120	1x38	270	1350	2.75kg
TBBT-120/C2-26	C23713	120	2x26	255	1600	3.45kg
TBBT-120/C2-38	C26713	120	2x38	375	2500	4.40kg
TBBT-120/C3-26	C23723	120	3x26	275	2400	4.60kg
TBBT-120/C3-38	C23733	120	3x38	275	3500	4.80kg

- Note:**
- 1) The busbar and conductor contact surface areas are serrated.
 - 2) Clamps are designed for 0° + 90° conductor entry.
 - 3) Other conductor sizes and centres are available on request.
 - 4) Material: Cast Aluminium
: Bolts & Nuts are Steel HT.8.8. H.D.G. (Other materials and grades available on request)
 - 5) Voltage: 500kV Max.