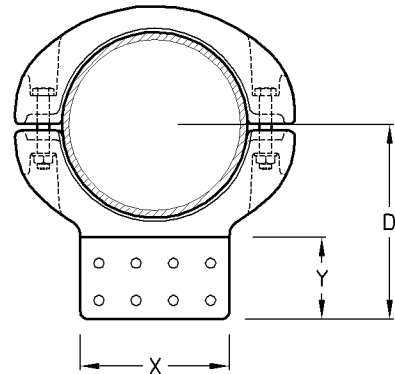
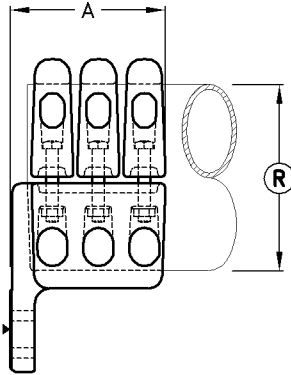


TYPE A: In Line



TYPE C: 90°

TBP-Type Palm Terminal Clamp

Type No	Catalogue No	Tube Dia. Ⓜ	Palm Size		A	D	Max Rating Amps	Unit Weight
			X	Y				
TBP-150/125P/A	C27083	150	125	125	341	N/A	4000	7.00kg
TBP-150/125P/C	C27103	150	125	125	200	237	4000	7.30kg
TBP-150/200X100P/A	C27093	150	200	100	316	N/A	4000	7.40kg
TBP-150/200X100P/C	C27113	150	200	100	200	212	4000	7.70kg
TBP-160/125P/A	C27943	160	125	125	341	N/A	4000	7.00kg
TBP-160/125P/C	C27953	160	125	125	200	237	4000	7.30kg
TBP-160/200X100P/A	C27963	160	200	100	316	N/A	4000	7.40kg
TBP-160/200X100P/C	C27973	160	200	100	200	212	4000	7.70kg
TBP-200/200X100P/A	C27603	200	200	100	317	N/A	5200	9.80kg
TBP-200/200X100P/C	C27623	200	200	100	205	230	5200	10.2kg
TBP-250/200X100P/A	C28023	250	200	100	317	N/A	6300	13.50kg
TBP-250/200X100P/C	C28033	250	200	100	205	250	6300	13.70kg

- Note:**
- 1) Palm and busbar contact surface areas are serrated.
 - 2) Palms are drilled to IEC 518 : 8 Dia. 14 Holes at 50mm centres.
or : 9 Dia. 14 Holes at 40mm centres.
 - 3) Material: Cast Aluminium
: Bolts & Nuts are Steel HT.8.8 H.D.G. (Other materials and grades available on request)
 - 4) Voltage : 500kV