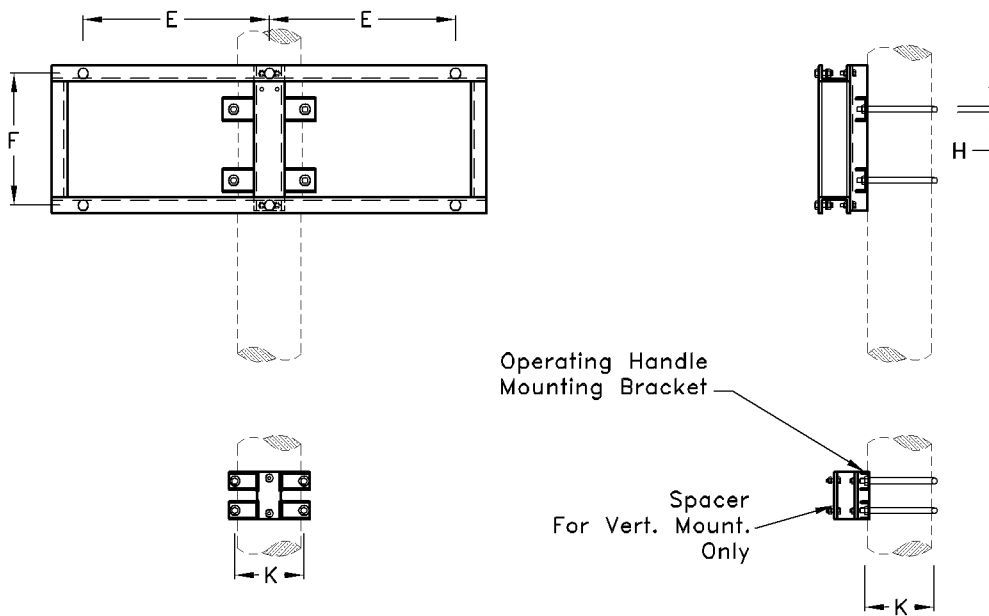


Rocking Isolator Single Pole Frame Mounted Horizontal



Rocking Isolator Single Pole Frame Mounted Vertical

Type No.	Catalogue No.	E	F	G	H	K	Unit Weight
SP-H&V/11kV	S74053	600	425	230	M16	292	62.0kg
SP-H&V/22kV	S74123	1000	425	230	M16	292	80.0kg
SP-H&V/33kV	S73993	1200	458	230	M16	292	97.0kg

- Note :**
- 1) Frames may be mounted Horizontal or vertical.
 - 2) Other Phase spacing available on request.
 - 3) Material: M.Steel H.D.G