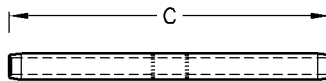
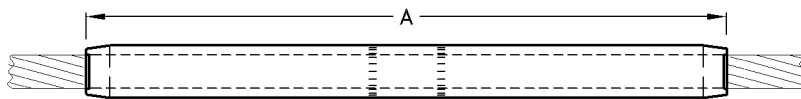


Full Tension Compression Mid Span Joint For AAAC Conductors

| Conductor | | Catalogue No. | A | A/F | Alcan Die | UTS Cond. kN | Unit Weight |
|-----------|-------|---------------|-----|------|-----------|--------------|-------------|
| Name | Dia. | | | | | | |
| Oak | 13.94 | L402223 | 460 | 25.4 | DA7 | 33.80 | 0.40kg |
| Mulberry | 15.87 | L402143 | 460 | 25.4 | DA7 | 41.90 | 0.50kg |
| Hornet | 16.25 | L402303 | 460 | 25.4 | DA7 | 25.27 | 0.50kg |
| Ash | 17.40 | L402313 | 460 | 25.4 | DA7 | 52.20 | 0.51kg |
| Elm | 18.80 | L402273 | 460 | 28.2 | DA8 | 58.70 | 0.65kg |
| Poplar | 20.09 | L402343 | 510 | 28.2 | DA8 | 64.00 | 0.98kg |
| Cockroach | 21.10 | L402393 | 510 | 32.3 | DA9 | 40.52 | 0.98kg |
| Sycamore | 22.58 | L402353 | 510 | 32.3 | DA9 | 80.50 | 0.86kg |
| Upas | 24.71 | L402233 | 600 | 36.2 | DA10 | 96.50 | 1.32kg |
| Centipede | 26.49 | L402363 | 600 | 36.2 | DA10 | 67.02 | 1.43kg |
| Yew | 28.44 | L402373 | 720 | 40.2 | DA11 | 128.1 | 2.05kg |
| Bull | 38.30 | L402383 | 780 | 49.7 | DA13 | 138.0 | 3.25kg |



INSERT

Full Tension Compression Mid Span Joint For ACSR Conductors

| Conductor | | Catalogue No. | A | C | A/F | | Alcan Die | | UTS Cond. kN | Unit Weight |
|-----------|-------|---------------|-----|-----|------|------|-----------|------|--------------|-------------|
| Name | Dia. | | | | Alu. | Stl. | Alu. | Stl. | | |
| Horse | 13.95 | L402163 | 550 | 180 | 25.4 | 12.7 | DA7 | DS8 | 59.85 | 1.76kg |
| Dog | 14.17 | L402173 | 550 | 180 | 25.4 | 10.1 | DA7 | DS7 | 32.48 | 1.45kg |
| Hare | 14.16 | L402033 | 550 | 180 | 25.4 | 10.1 | DA7 | DS7 | 37.42 | 1.01kg |
| Leopard | 15.81 | L402183 | 550 | 180 | 25.4 | 12.7 | DA7 | DS8 | 40.65 | 1.92kg |
| Tiger | 16.53 | L402413 | 550 | 180 | 25.4 | 12.7 | DA7 | DS8 | 65.30 | 1.94kg |
| Wolf | 18.13 | L402043 | 550 | 180 | 28.2 | 12.7 | DA8 | DS8 | 67.50 | 1.96kg |
| Chickadee | 18.87 | L402133 | 550 | 180 | 28.2 | 12.7 | DA8 | DS8 | 44.68 | 1.99kg |
| Lynx | 19.53 | L402293 | 550 | 180 | 28.2 | 12.7 | DA8 | DS8 | 78.00 | 2.00kg |
| Panther | 21.00 | L402063 | 610 | 240 | 32.3 | 15.2 | DA9 | DS9 | 89.92 | 2.01kg |
| Bear | 23.47 | L402073 | 630 | 240 | 32.3 | 16.1 | DA9 | DS10 | 111.13 | 3.07kg |
| Goat | 25.97 | L402093 | 685 | 240 | 36.2 | 16.1 | DA10 | DS10 | 135.0 | 2.79kg |
| Tern | 27.00 | L402213 | 720 | 180 | 40.2 | 12.7 | DA11 | DS8 | 101.97 | 2.87kg |
| Zebra | 28.56 | L402103 | 720 | 240 | 40.2 | 16.1 | DA11 | DS10 | 130.49 | 2.71kg |
| Dinosaur | 35.56 | L402113 | 780 | 260 | 49.7 | 20.2 | DA13 | DS12 | 180.64 | 5.71kg |

- Note:** 1) Compression tubes are marked showing conductor name, crimp positions and die size.
 2) Other conductor sizes are available on request.
 3) Material: Extruded Aluminium.
 : Steel Inserts—D.F.Steel H.D.G.