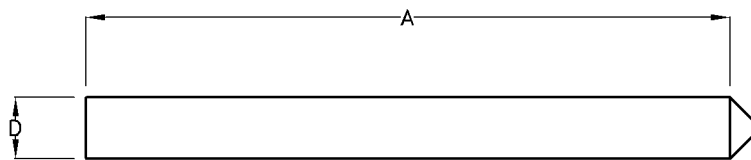


Earth Rod Clamp

Type No.	Catalogue No.	A	B	C	D	Unit Weight
E-RC16	B34343	37	27	24	ø10	0.065kg

Note: 1) Material: Brass
 : To fit conductor with max. cross section of 70mm².



Earth Rod

Type No.	Catalogue No.	A	D	Unit Weight
E-R15/16	B34332	1500	ø16	Variable
E-R18/16	B34322	1800	ø16	Variable
E-R24/16	B300412	2400	ø16	Variable

Note: 1) Material: HT. Steel. Cu coated