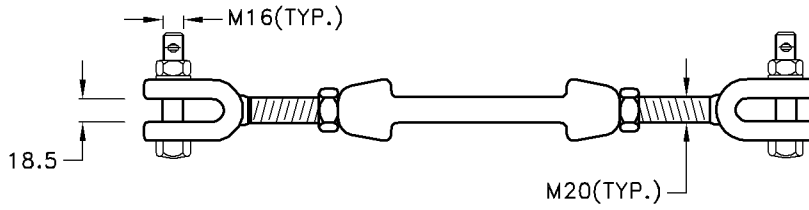
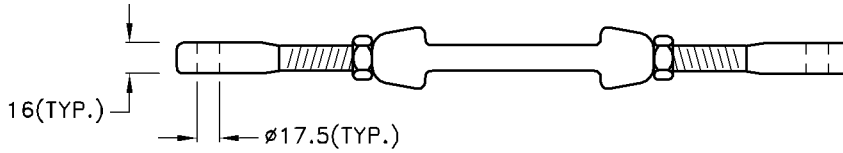


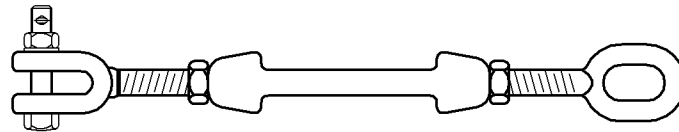
Oval Eye/Oval Eye



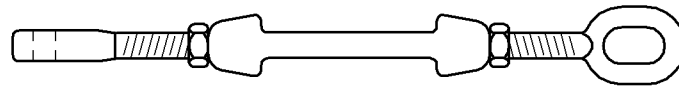
Clevis/Clevis



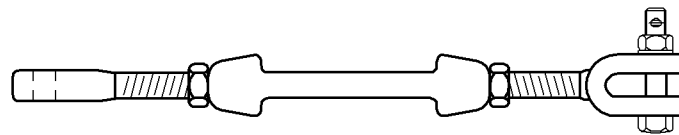
Tongue/Tongue



Clevis/Oval Eye



Tongue/Oval Eye



Tongue/Clevis

Turnbuckle

Type No.	Catalogue No.	A		U.T.S (kN)	Unit Weight
		Min.	Max.		
Oval Eye/Oval Eye	B32223	370	540	120	2.50kg
Clevis/Clevis	B32243			120	2.70kg
Tongue/Tongue	B32263			120	2.23kg
Clevis/Oval Eye	B32233			120	2.50kg
Tongue/Oval Eye	B32213			120	2.50kg
Tongue/Clevis	B32273			120	2.50kg

Note: 1) Material: D.F.Steel H.D.G.
: Bolt—H.T.Steel 8.8 H.D.G.
2) Supplied with split cotter pin.