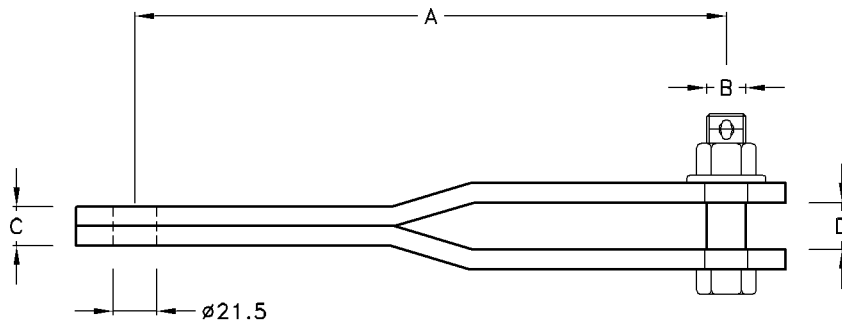


Cranked Extension Link

Type No	Catalogue No	A	B	C	D	U.T.S kN	Unit Weight
CEL-1/120	H330300	300	M16	16	18	120	3.60kg

- Note:** 1) Material: M.Steel H.D.G.
: Bolt H.T.Steel 8.8 H.D.G.
2) Other lengths available on request.
3) Can be supplied either with split cotter pin or hump back split pin.
To be specified.



Cranked Extension Link

Type No	Catalogue No	A	B	C	D	U.T.S kN	Unit Weight
CEL-CR1/210	H360300	300	M20	20	24	210	3.70kg

- Note:** 1) Material: M.Steel H.D.G.
: Bolt H.T.Steel 8.8 H.D.G.
2) Other lengths available on request.
3) Can be supplied either with split cotter pin or hump back split pin.
To be specified.