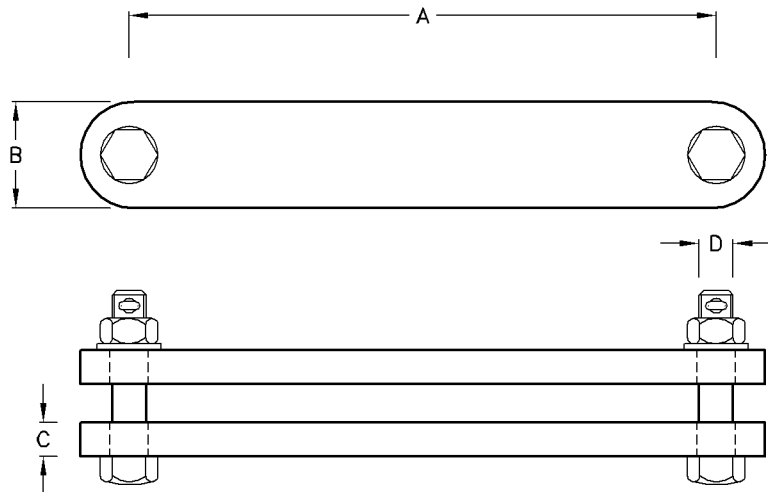


### Extension Link Single

Type No.	Catalogue No.	A	B	C	D	U.T.S (kN)	Unit Weight
EL-100/120	H320100	100	50	16	17.5	120	1.00kg
EL-150/120	H320150	150	50	16	17.5	120	1.25kg
EL-200/120	H320200	200	50	16	17.5	120	1.50kg
EL-300/120	H320300	300	50	16	17.5	120	2.50kg
EL-450/120	H320450	450	50	16	17.5	120	4.25kg
EL-150/210	H330150	150	50	20	21.5	210	2.50kg
EL-200/210	H330200	200	50	20	21.5	210	3.00kg

- Note:** 1) Material: M.Steel H.D.G.  
 2) Other lengths are available on request.



### Extension Link Double

Type No.	Catalogue No.	A	B	C	D	U.T.S (kN)	Unit Weight
DEL-100/120	H340100	100	50	8	M16	120	2.50kg
DEL-100/210	H350100	100	60	10	M20	210	3.20kg

- Note:** 1) Material: M.Steel H.D.G.  
           : Bolt H.T.Steel 8.8 H.D.G.  
 2) Can be supplied either with split cotter pin or hump back split pin.  
 To be specified.