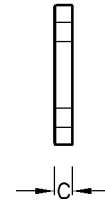
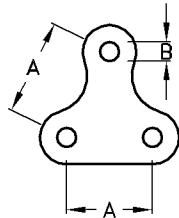


### Yoke Plate Rectangular-Corona Fixing Type

Type No.	Catalogue No.	A	B	C	D	E	U.T.S (kN)	Unit Weight
R-YP	H39812	65	380	40	∅17.5	16	120	4.70kg

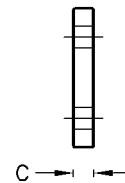
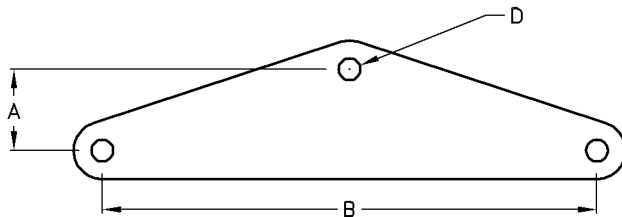
- Note:** 1) Material: M.Steel H.D.G.  
2) Other conductor spacings are available on request.



### Equilateral Landing Plate

Type No.	Catalogue No.	A	B	C	U.T.S (kN)	Unit Weight
EQL-120	H30702	80	17.5	16	120	1.50kg
EQL-210	H30792	80	21.5	20	210	2.00kg

- Note:** 1) Material: M.Steel H.D.G.



### Yoke Plate Isosceles Triangle

Type No.	Catalogue No.	A	B	C	D	U.T.S (kN)	Unit Weight
YP-1	H30712	65	150	16	17.5	120	1.70kg
YP-2	H30722	65	330	16	17.5	120	3.30kg
YP-3	H30732	65	380	16	17.5	120	3.90kg
YP-4	H30742	65	450	16	17.5	120	4.70kg
YP-5	H32392	100	450	16	17.5	120	5.00kg
YP-6	H32502	45	380	16	17.5	120	3.70kg
YP-7	H33502	45	260	16	17.5	120	3.30kg
YP-8	H34632	85	300	16	17.5	120	3.60kg
YP-9	H34642	65	300	16	17.5	120	3.50kg
YP-10	H39832	65	380	20/16	21.5/2x17.5	210/120	5.30kg

- Note:** 1) Material: M.Steel H.D.G.  
2) Other spacings are available on request.