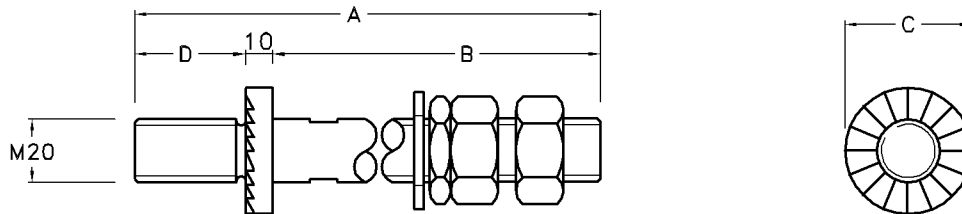


Spindle (Capless)

Type No.	Catalogue No.	A	B	C	D	Unit Weight
I-SP/C	B883946	290	250	31	35	1.10kg

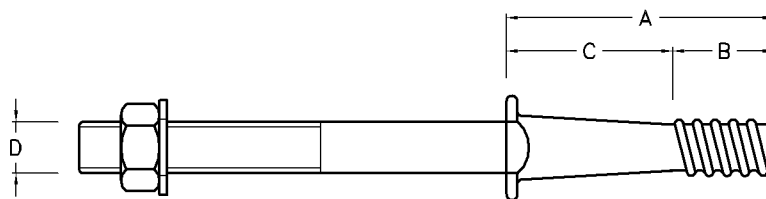
Note: 1) Spindles are supplied with 2 x M20 nuts, 2 x washers (1 x curved , 1 flat) and bonding clip.
2) Material: D.F.Steel H.D.G.



Spindle (Ratchet)

Type No.	Catalogue No.	A	B	C	D	Unit Weight
I-SP/R	B39783	290	250	∅30	30	1.10kg

Note: 1) Spindles are supplied with 2 x M20 nuts, 1 x flat washers and 1 x lock washer.
2) Material: D.F.Steel H.D.G.



Spindle (Lead/Steel Head)

Type No.	Catalogue No.	A	B	C	D	Unit Weight
LEAD HEAD M1	B300093	152	44	108	M16	1.00kg
LEAD HEAD M2	B300123	168	44	124	M20	1.08kg
STEEL HEAD M3	B300103	229	47	182	M22	1.84kg
STEEL HEAD M4	B300113	165	47	118	M20	1.60kg

Note: 1) Spindles are supplied with M20 nut and washer.
2) Material: D.F.Steel H.D.G.