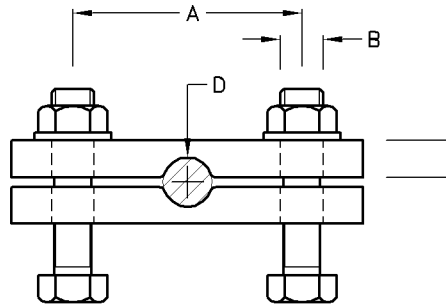


### Earth Tail Clamp

Type No.	Catalogue No.	A	D	Unit Weight
E/T 8-12	C34333	35	M16X60	0.70kg

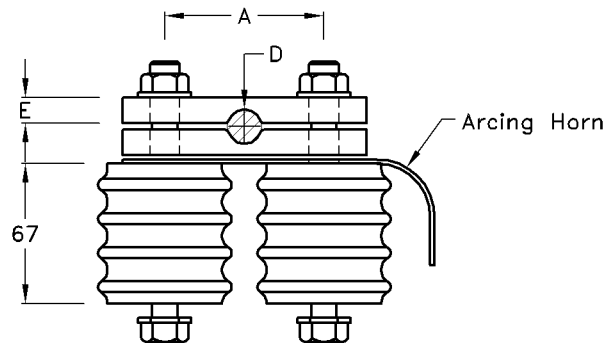
**Note:** 1) Material: Cast Copper  
: Bolts & Nuts HT.Steel 8.8 H.D.G.



### Earth Wire Clamp

Type No.	Catalogue No.	A	B	Stranding Steel Wire	D O/All Incl. Armour Rods	E	Unit Weight
E/W-C	H32403	75	M12X65	7/3.35	ø15.7	16	1.85kg
E/W-C	H32413	75	M12X65	19/2.65	ø20.7	20	2.00kg

**Note:** 1) Material: M.Steel H.D.G.  
: Bolts & Nuts HT.Steel 8.8 H.D.G.



### Insulated Earth Wire Clamp

Type No.	Catalogue No.	A	Stranding Steel Wire	D O/All Incl. Armour Rods	E	Unit Weight
I E/W-C	H34693	75	7/3.35	ø15.7	16	2.85kg
I E/W-C	H32423	75	19/2.65	ø20.7	20	3.00kg

**Note:** 1) Material: M.Steel H.D.G.  
: Bolts & Nuts HT.Steel 8.8 H.D.G.