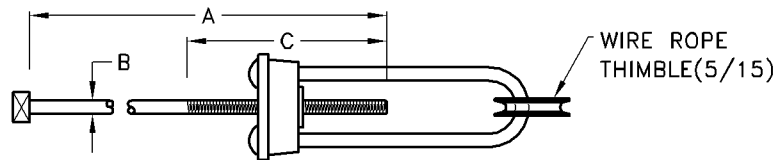


Stay Rod Non-Adjustable

Type No.	Catalogue No.	A	B	C	D	Unit Weight
M12/1500	B35212	1500	15	M12	∅25	3.50kg
M16/2250	B35222	2250	15	M16	∅25	4.50kg
M20/2000	B34142	2000	15	M20	∅25	5.50kg

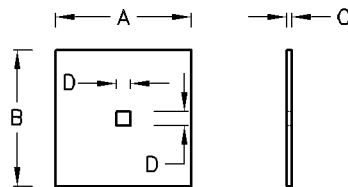
Note : 1) Material: Steel H.D.G.



Stay Rod Adjustable

Type No.	Catalogue No.	A	B	C	Unit Weight
M16/1800	B34233	1800	M16	300	5.50kg
M16/2400	B34223	2400	M16	300	7.00kg
M20/1800	B34033	1800	M20	300	8.00kg
M20/2000	B34243	2000	M20	300	8.90kg
M20/2400	B34253	2400	M20	300	9.50kg
M24/2400	B34263	2400	M24	300	14.00kg

Note : 1) Material: Steel H.D.G.



Stay Plate

Type No.	Catalogue No.	A	B	C	Stay Rod Size D	Unit Weight
100X100X6	B34262	100	100	6	M24	0.48kg
150X150X6	B34303	150	150	6	M24	1.17kg
300X300X6	B34822	300	300	6	M16	3.70kg
300X300X6	B34363	300	300	6	M24	4.30kg
380X380X6	B34302	380	380	6	M24	5.79kg
380X380X5	B34282	380	380	5	M24	5.79kg
380X380X6	B34152	380	380	6	M20	6.95kg
400X400X6	B34161	400	400	6	M20	7.75kg
450X450X5	B34252	450	450	5	M20	8.15kg
450X450X6	B34353	450	450	6	M24	9.74kg
600X600X5	B34922	600	600	5	M24	14.4kg
600X600X6	B34832	600	600	6	M24	16.0kg

Note : 1) Material: Steel H.D.G.

2) Other plate sizes are available on request.