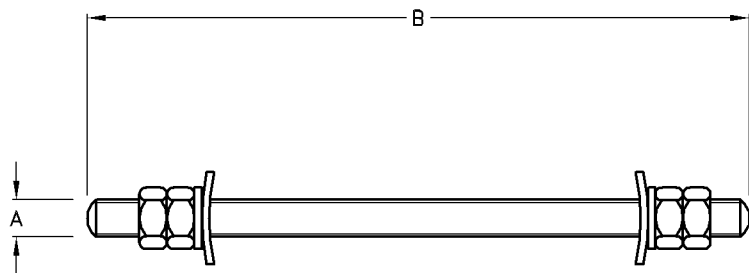


Eye Bolt Assembly

Type No.	Catalogue No.	A	B	C	Unit Weight
EYE BOLT	B33933	Sizes are as per customer requirements			Variable

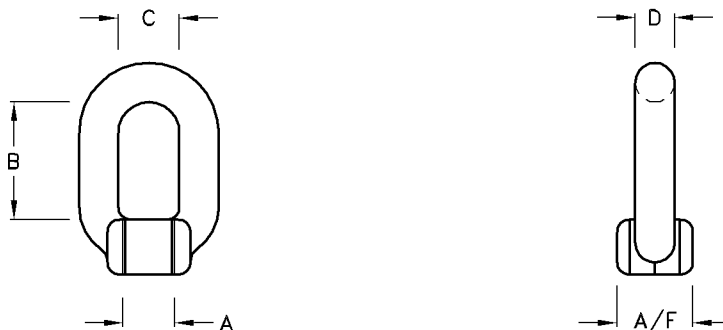
- Note:** 1) Eye bolts are supplied from M16 to M24, complete with 1 nut and 1 flat washer.
 2) Eye bolts may also be supplied with square curved washers, spring washers and additional nuts
 3) Material : D.F.Steel H.D.G.



Threaded Rod Assembly

Type No.	Catalogue No.	A	B	Unit Weight
THRD.-ROD	B33542	Sizes are as per customer requirements		Variable

- Note:** 1) Threaded rods are supplied from M16 to M24, complete with 2 nuts and 2 flat washers.
 2) Threaded rods may also be supplied with square curved washers, spring washers etc.
 3) Material : M.Steel H.D.G.



Eye Nut

Catalogue No.	A	B	C	A/F	U.T.S. (kN)	Unit Weight
B33792	M12	35	20	20	20	0.36kg
B33882	M16	40	21	25	40	0.38kg
B39152	M20	45	25	31	70	4.00kg

- Note:** 1) Material: D.F.Steel H.D.G.