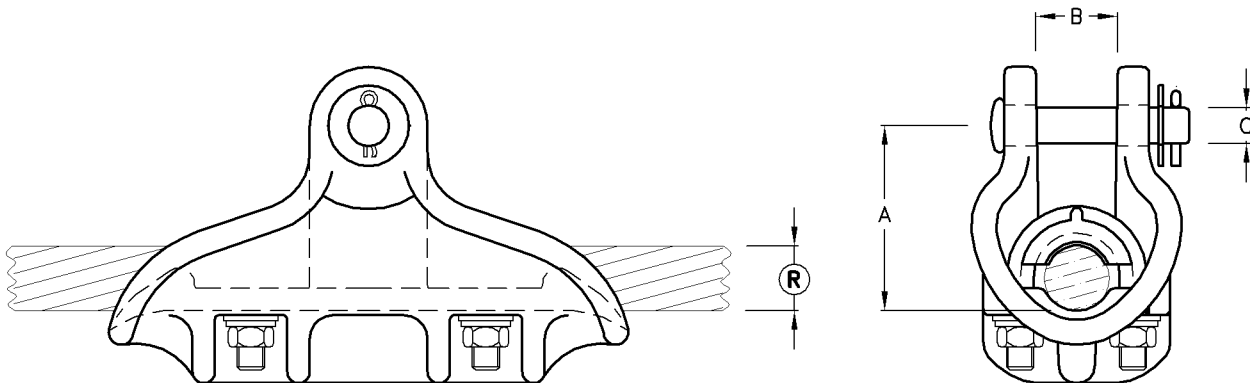


Suspension Aluminium Clamp Cradle Type.

Type No.	Catalogue No.	CONDUCTOR [®] Min.-Max.	A	B	C	U.T.S (kN)	Unit Weight
SC-5/21	B30193	5-21	54	23	16	70	1.05kg
SC-12/29	B30153	12-29	64	30	16	70	1.20kg

Note: 1) Material: Cast Aluminium
: U Bolts & Nuts M.Steel H.D.G.
: Clevis Pin D.F.Steel H.D.G.



Suspension Aluminium Clamp Cradle Type

Type No.	Catalogue No.	CONDUCTOR [®] Min.-Max.	A	B	C	U.T.S (kN)	Unit Weight
SPA-20/30	H31363	20-30	82	36	16	70	2.40kg
SPA-30/40	H30173	30-40	82	44	16	70	3.10kg

Note: 1) Material: Cast Aluminium
: U Bolts & Nuts M.Steel H.D.G.
: Clevis Pin D.F.Steel H.D.G.