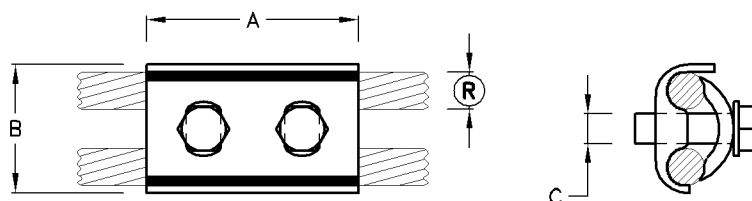


Parallel Grooved Clamp Forged

Type No.	Catalogue No.	Cond. Range [®] Min.-Max.	Application	A	B	C	Unit Weight
2PG/F AL	B22202	4 – 15	Aluminium	42	20	M8	0.20kg
2PG/F BI	B34453	4 – 15	Bi-Metal	42	20	M8	0.20kg

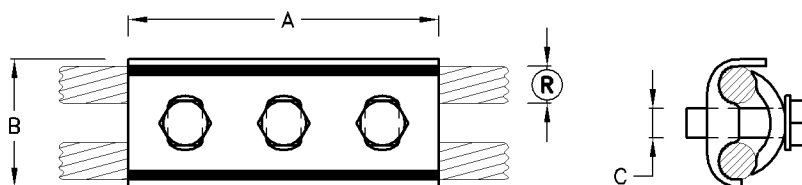
Note: 1) Material: Forged Aluminium
: Bolts & Nuts M.Steel Cadmium Plated.



Parallel Grooved Clamp Extruded

Type No.	Catalogue No.	Cond. Range [®] Min.-Max.	Application	A	B	C	Unit Weight
1PG/E AL	B22253	3.0 – 11.8	Aluminium	72	42	M10	0.19kg
2PG/E BI	B34713	4.0 – 15.0	Bi-Metal	85	53	M12	0.20kg
2PG/E AL	B34613	4.0 – 15.0	Aluminium	85	53	M12	0.20kg
2PG/E BI	B34703	6.6 – 18.9	Bi-Metal	96	62	M12	0.20kg
2PG/E AL	B34783	6.6 – 18.9	Aluminium	96	62	M12	0.20kg

Note: 1) Material: Extruded Aluminium
: Bolts & Nuts M.Steel Cadmium Plated.



Parallel Grooved Clamp Extruded

Type No.	Catalogue No.	Cond. Range [®] Min.-Max.	Application	A	B	C	Unit Weight
3PG/E BI	B34633	6.6 – 18.9	Bi-Metal	144	62	M12	0.28kg
3PG/E AL	B34683	6.6 – 18.9	Aluminium	144	62	M12	0.28kg

Note: 1) Material: Extruded Aluminium
: Bolts & Nuts M.Steel Cadmium Plated.