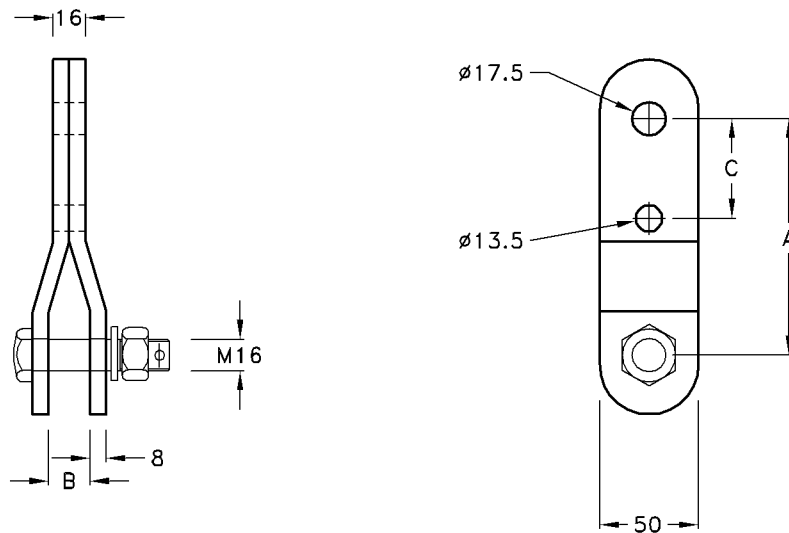


### Clevis Tongue Straight Pin Type

Type No.	Catalogue No.	A	B	C	U.T.S (kN)	Unit Weight
CTS-70	B30442	80	19	∅16	70	0.50kg

- Note:** 1) Material: D.F.Steel H.D.G.  
: Pin D.F.Steel H.D.G.  
2) Can be supplied either with split cotter pin or hump back split pin.  
To be specified.



### Clevis Tongue Straight Arcing Horn Type

Type No.	Catalogue No.	A	B	C	U.T.S (kN)	Unit Weight
CTS/AH-120	B30563	120	19	50	120	1.32kg

- Note:** 1) Material: M.Steel H.D.G.  
: Bolt D.F.Steel H.D.G.  
2) Can be supplied either with split cotter pin or hump back split pin.  
To be specified.