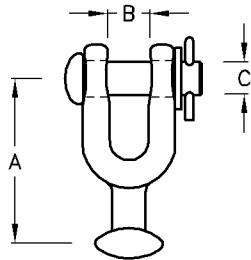


## Ball Hook

Type No.	Catalogue No.	I.E.C. Ball	A	B	C	U.T.S (kN)	Unit Weight
HB-70	B30322	16B	67	25	25	70	0.60kg

**Note:** 1) Material: D.F.Steel H.D.G.

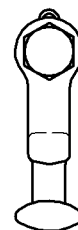
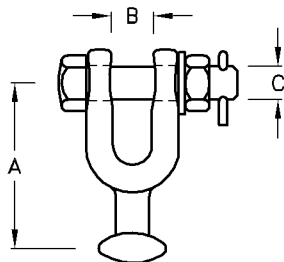


## Clevis Ball Pin Type

Type No.	Catalogue No.	I.E.C.	A	B	C	U.T.S (kN)	Unit Weight
CB-70	B30333	16B	70	19	ø16	70	0.50kg

**Note:** 1) Material: D.F.Steel H.D.G.

2) Can be supplied either with split cotter pin or hump back split pin.  
To be specified.



## Clevis Ball Bolt Type

Type No.	Catalogue No.	I.E.C.	A	B	C	U.T.S (kN)	Unit Weight
CB-120	B30353	16B	70	19	M16	120	0.60kg

**Note:** 1) Material: D.F.Steel H.D.G.

: Bolt H.T.Steel 8.8 H.D.G.

2) Can be supplied either with split cotter pin or hump back split pin.  
To be specified.