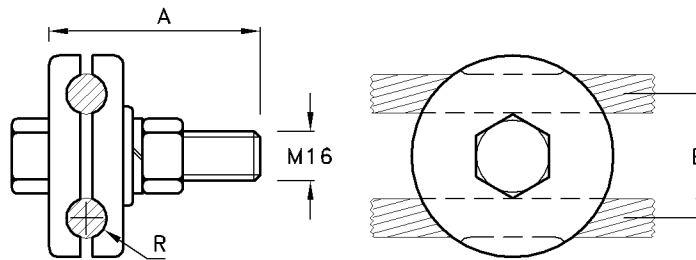


Wire Rope Clamp

Type No.	Catalogue No.	R	Conductor Range	Unit Weight
WRC6	B34533	R3	Up to 6mm	0.21kg
WRC8	B34393	R4	Up to 8mm	0.41kg
WRC10	B34553	R5	Up to 10mm	0.68kg
WRC12	B34543	R6	Up to 12mm	1.30kg
WRC16	B34433	R8	Up to 16mm	2.10kg

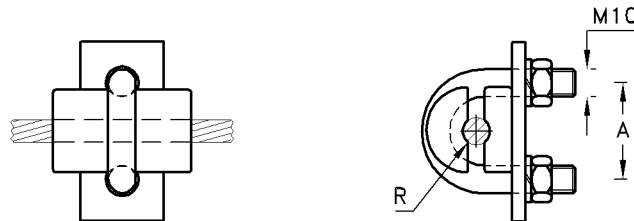
Note: 1) Material: Steel H.D.G.
: U Bolts M.Steel H.D.G.



Round Ground Earth Wire Clamp

Type No.	Catalogue No.	A	B	R	Unit Weight
PG 9/13 E/W	H22413	M16X65	40	6.5	0.60kg

Note: 1) Material: D.F.Steel H.D.G.
: Bolts H.T.Steel 8.8 H.D.G.



U Bolt-Type Ground Earth Wire Clamp

Type No.	Catalogue No.	A	R	Unit Weight
4/13 E/W	C35203	35	6.5	0.31kg

Note: 1) Material: D.F.Steel H.D.G.
: U Bolts M.Steel H.D.G.