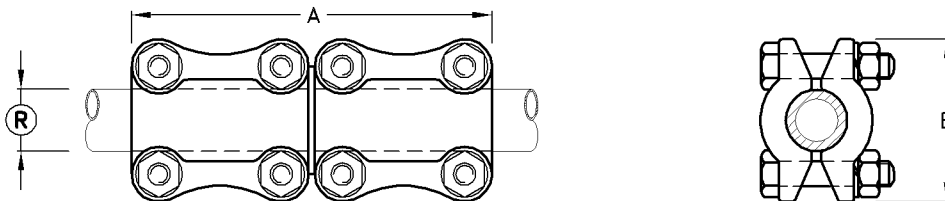


Twin Horizontal Tap-off Clamp For Tubular Busbar

Type No.	Catalogue No	Busbar Ⓡ	Stud Ⓢ	A	B	Amprage Rating	Unit Weight
C-1014	C28853	26-38	26	115	64	1350	4.30kg

- Note:**
- 1) Busbar and stud contact surface areas are smooth bore.
 - 2) Other busbar and stud sizes available on request.
 - 3) Material: GM3, hot tin dipped.
: Bolts & Nuts-Steel HT.8.8 H.D.G.
 - 4) Voltage: 150kV



In-Line Coupler For Tubular Busbar

Type No.	Catalogue No	Bus Tube Dia Ⓡ	A	B	Amprage Rating	Unit Weight
C-71282	C29763	25	135	64	900	3.20kg
C-71286	C29773	38	175	85	1300	4.40kg
C-71290	C29783	50	195	95	1750	6.00kg
C-71292	C28353	64	235	115	2150	7.20kg
C-71294	C29793	76	260	127	2500	8.50kg

- Note:**
- 1) In-line coupler contact surface areas are smooth bore.
 - 2) Material: GM3, hot tin dipped
: Bolts & Nuts-Steel HT.8.8 H.D.G.
 - 3) Voltage: 150kV Max.