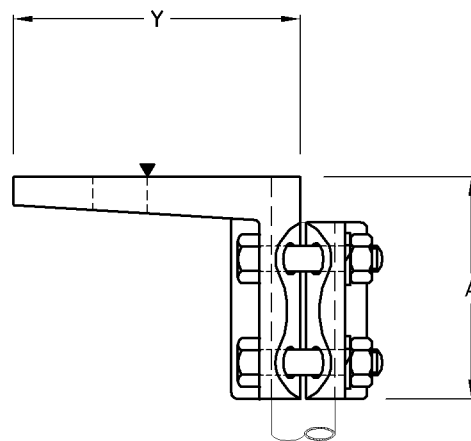
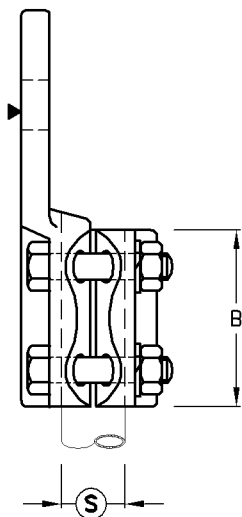


IN LINE



90 DEG.

Terminal Lug For Tubular Busbar

Type No.	Catalogue No.	Bus Tube Ⓢ	Palm Size		A	B	Amprage Rating	Unit Weight
			X	Y				
C-71410	C29843	20	50	75	145	60	700	1.30kg
C-71410/9	C29843/9	20	50	85	90	60	700	1.30kg
C-71412	C29853	25	75	75	150	60	900	1.60kg
C-71412/9	C29853/9	25	75	85	90	60	900	1.60kg
C-71414	C29863	32	75	75	151	60	1000	1.80kg
C-71414/9	C29863/9	32	75	85	90	60	1000	1.80kg
C-71416	C29873	38	100	100	185	82	1300	2.10kg
C-71416/9	C29873/9	38	100	105	90	85	1300	2.10kg
C-71417	C29883	38	75	75	170	82	1300	1.90kg
C-71417/9	C29883/9	38	75	85	90	85	1300	1.90kg
C-71420	C29893	50	100	100	183	83	1750	2.40kg
C-71420/9	C29893/9	50	100	110	90	93	1750	2.40kg
C-71421	C29903	64	100	100	195	95	2150	2.80kg
C-71421/9	C29903/9	64	100	110	125	95	2150	2.80kg
C-71422	C29913	76	100	100	205	105	2500	3.20kg
C-71422/9	C29913/9	76	100	110	125	105	2500	3.20kg

- Note:**
- 1) Clamps are supplied in-line or 90°
 - 2) Clamps are machined to specified busbar sizes.
 - 3) Palms may be supplied undrilled or drilled to specified requirements.
 - 4) Material: GM3, hot tin dipped.
 - 5) Voltage : 150kV Max.