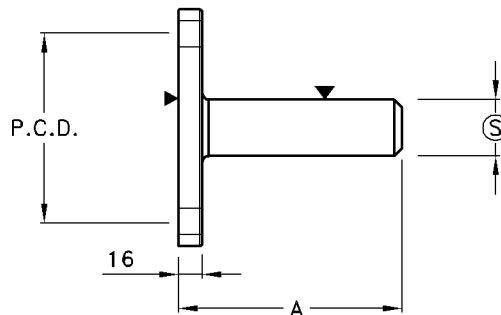


### SCP-Stud Palm Adaptor

Type No.	Catalogue No.	Stud $\phi$ (S)	Palm Size		A	B	Max Rating Amps	Unit Weight
			X	Y				
SCP-26/Cu	C28783	26	90	90	125	18	1200	1.60kg
SCP-38/Cu	C28793	38	90	90	125	18	2500	2.00kg

- Note:**
- 1) The above SCP-Type adaptors are available with stud sizes ranging from 16-60mm
  - 2) Other palm sizes are available on request.
  - 3) The above palm contact surface areas are serrated.
  - 4) Palms are supplied drilled to suit requirements.



### SC-Stud Palm Adaptor

Type No.	Catalogue No.	Stud $\phi$ (S)	P.C.D.	A	Max Rating Amps	Unit Weight
SC-26/76/AL.	C28922	26	76	135	1200	1.70kg
SC-26/127/AL.	C28932	26	127	135	1200	2.00kg
SC-26/44C/AL.	C28982	26	44 C/C	135	1200	1.00kg
SC-38/76/AL.	C28902	38	76	135	2500	1.50kg
SC-38/127/AL.	C28962	38	127	135	2500	1.70kg
SC-26/76/Cu	C28942	26	76	135	1200	2.80kg
SC-26/127/Cu	C28952	26	127	135	1200	3.00kg
SC-26/44C/Cu	C28983	26	44 C/C	135	1200	2.00kg
SC-38/76/Cu	C28912	38	76	135	2500	2.80kg
SC-38/127/Cu	C28972	38	127	135	2500	3.00kg
SC-38/44C/Cu	C28993	38	44 C/C	135	2500	2.90kg
SC-38/127/STL	C28893	38	127	135	100	1.90kg

- Note:**
- 1) The above SCP-Type adaptors are available with stud sizes ranging from 16-60mm
  - 2) The above palm contact surface areas are serrated.
  - 3) The above adaptors are supplied with:
    - 4 Dia. 14 Holes at 44 Centres
    - or : 4 Dia. 14 Holes at 76 P.C.D.
    - or : 8 Dia. 18 Holes at 127 P.C.D.
  - 4) Material: Al-Aluminium  
 : Cu-Copper, hot tin dipped  
 : Stl-Mild steel, hot dip galvanized
  - 5) Voltage: 500kV Max.